

Restoration



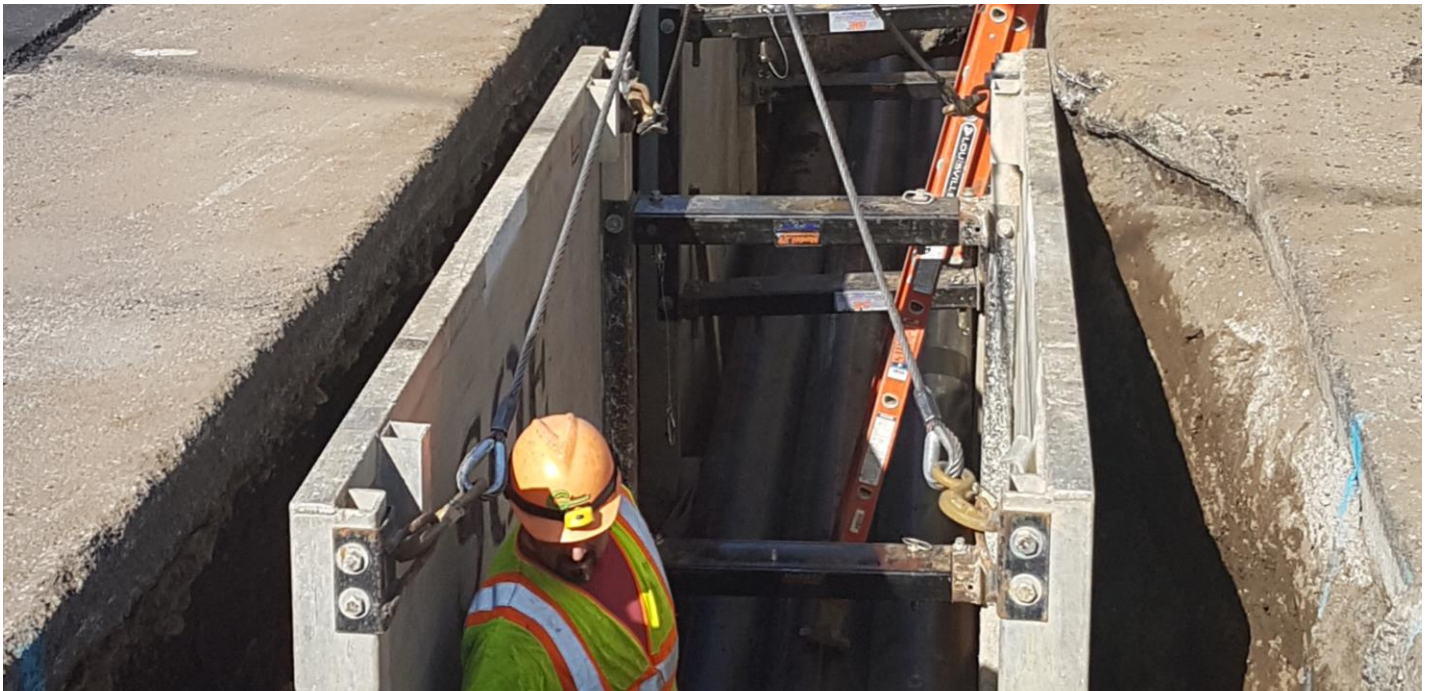
Following the completion of splice vault and duct bank installation, excavated areas will be restored.

Cable Installation and Splicing



1. Underground cable comes on trucks specifically designed for the installation of underground cable. Crews will pull cable from one splice vault to another along the project route.
2. Crews will set up a climate-controlled environment at each splice vault location to splice the underground cables together. This activity is continuous.

Underground Construction



Crews will ready roadways and install an underground duct bank in which the new cable will be installed. This may include trenchless installation methods.

Vault Installation



Underground vaults will be installed at intervals along the route to splice, or tie together underground cables.